

Sai Vasudha

Blissful home in a blissful
Neighborhood...!



Lay -out plan



Sai
Vasudha

BUILDING HAPPY HOMES WITH EXPERIENCE DEDICATION & SKILL

At **SAI VASUDHA** great design goes beyond aesthetics, it emulates nature to bring you closer to your mental and physical balance. Enter the peaceful neighborhood of **SAI VASUDHA** to rejoice at the harmony and peace of mind with serene surroundings.



Amenities & Features

- Temple
- Vaastu compliant
- 24 hour security with CCTV
- Solar fencing
- Children's play area
- Walking track
- Rain water harvesting pits
- Sewage treatment plan

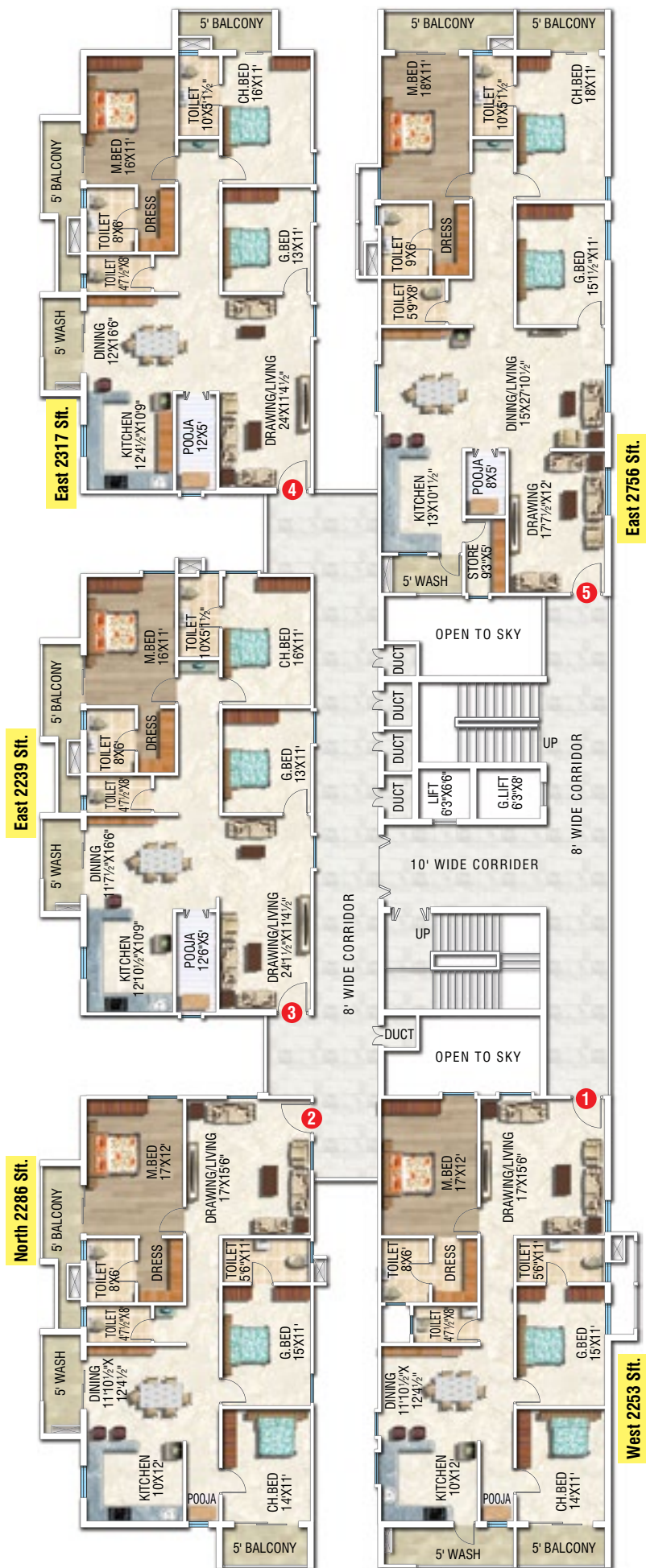
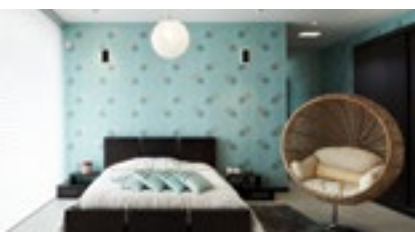


Club house Features

- Multipurpose hall
- Amphi theatre
- Gymnasium
- Indoor games (Table tennis, snooker, carroms, chess, etc..)
- Departmental store
- Restaurant
- Guest rooms
- Terrace swimming pool



Typical floor plan - Block - C



SPECIFICATIONS

FOUNDATION & STRUCTURAL FRAME:

R.C.C. framed structure to with stand dead, live, wind & seismic loads designed as per the relevant BIS. Standards seismic zone.

SUPER STRUCTURE:

Best quality AAC block/red brick wall smooth plastering.

JOINERY WORKS

Main Door:

Frame : Teak wood door frame with polish.

Shutter : Trak wood/Hard wood/Veneer with polish.

Hardware : SS reputed make hardware.

Internal Door:

Frame : Teak wood door frame with polish/paint.

Shutter : Trak wood/Hard wood/Veneer with polish.

Hardware : SS make reputed hardware.

French Doors

Frame : UPVC door frames.

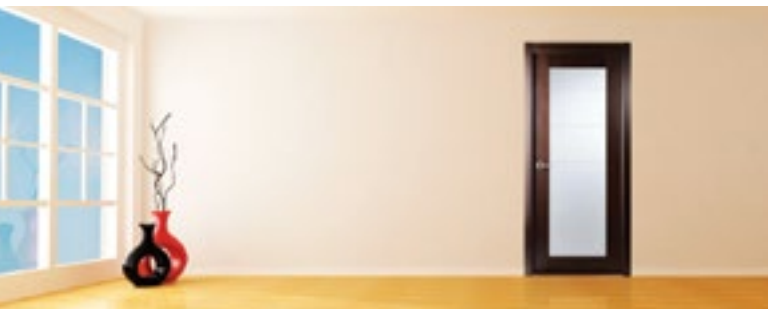
Shutter : UPVC sliding glass doors.

Toilet Doors

Frame : Best quality hard wood door / WPC frame with polish/paint.

Windows : UPVC with mosquitoes mesh.

Ventilators : UPVC ventilator with exhaust fan provision.



TILE DADO:

Kitchen: Digital tiles/Glazed ceramic tile dado up to 2' height above the kitchen platform.

Toilets: Designer premium tile dado up to 7' in wet areas and 4'6" in dry area height, of reputed make.

Utility & Wash: Branded rustic vitrified tile dado up to 3' height.

FLOORING

Room: Drawing, living, dining, bedroom with 2 x 2 Vitrified tiles of reputed make.

Toilets/ Utility: Anti-skid matt-finish tiles.

Living, Balconies: Vitrified tiles of reputed make.

Corridors: Granite/Marble/ matt finish tiles of reputed make.

Staircase: Granites / Marble / Kota stones of reputed make / Hard matt tiles.

Parking: Tandır stone / Parking tiles.

PAINTING

External: Texture / Putty with one coat primer and 2 coats of external emulsion.

Internal: Smooth finish with 2 coats of wall putty, 1 coat water based primer and 2 coat washable emulsion.

TOILETS

Sanitary Fittings: Wash basin, flush tank of reputed make.

Exhausts: Provision for exhaust fan in all toilets.

CP Fittings: Hot and cold water mixer spout with shower, tap for wash basin.

Water Proof: Water proof for all toilets.

KITCHEN / UTILITY

Platform & Sink: Granite counter top with stainless steel sink of reputed.

Water connections: Bore & municipal water connection with a provision for fixing an online drinking water UV or RO purifying system of reputed make.

Exhausts: Provision for exhaust fan / Chimney.

Utility: Laundry facility with all necessary water, electrical and drain provisions. Wet area for washing utensils etc..

ELECTRICAL

Bedrooms: Concealed copper wiring in conduits, plug points and switches of reputed make. All the necessary light and fan points shall be provided as per the design.

Kitchen: Power plugs for cooking range, chimney, refrigerator, microwave ovens, mixer/grinders and all the necessary light and fan points shall be provided as per the design.

Toilets: Power outlets for geysers in all toilets.



TELECOM:

Telephone points in drawing rooms. Intercom facility in all flats connecting to security.

CABLE TV:

Provision for common dish antenna with concealed cables for all living room and bedroom.

INTERNET:

Provision for internet connection in living room / master bedroom.

GENERATOR BACK UP:

100% back up for all common areas.

DISCLAIMER: The information herein i.e. specifications, designs, dimensions etc. are subject to change without notifications as may be required by the relevant authorities or the assigned architect and cannot form a part of an offer or contract unless specially covered in the contract. Whilst every care is taken in providing this information the owner, the developer and the managers cannot be held liable for variations. All illustrations and pictures are artists impressions only.

Location plan



Location Advantages

Landmarks

- P.N. Bus stand 10 Min.
- Railway station 10 Min.
- Outer ring road 02 Min.
- IBPM I.R.R 10 Min.
- Durga flyover 06 Min.

Schools

- GIG International school 01 Min.
- Ambitus 10 Min.
- Atkinson 03 Min.
- Don bos co 04 Min.
- St.Anns 04 Min.

Restaurants & Malls

- Cross roads 02 Min.
- S. Grand 02 Min.
- Vijetha mart 02 Min.
- Reliance mart 02 Min.

Hospitals

- Andhra hospitals 03 Min.
- Ramesh hospitals 10 Min.
- Sun rise hospitals 10 Min.

Temples

- Durga Temple 07 Min.
- Ayyapa swamy Temple 01 Min.
- Krishna godavari sangamam 10 Min.

Promoting & Marketing by



SREE MADHURYA PROJECTS PVT. LTD.

Sy.No: 98/1A4, 98/1B, 98/2, National Highway NH-65
Main Road, Near LANCO TOWNSHIP
Gollapudi - 521225, Vijayawada Rural, Krishna district.

Developed by
Veranya Heights

Contact:
80196 56689
80194 86689
90524 46340